



Move Utah

ACTIVE, HEALTHY, CONNECTED COMMUNITIES

Catching the Vision: How the Wasatch Choice
Vision is Expanding Opportunities for All

GOLD LEVEL PARTNERS



SILVER LEVEL PARTNERS



BRONZE LEVEL PARTNERS

AECOM

 **FELSBURG
HOLT &
ULLEVIG**

 **BIO-WEST**


**DAVID EVANS
AND ASSOCIATES INC.**

Parametrix
ENGINEERING . PLANNING . ENVIRONMENTAL SCIENCES

**Sam
Schwartz**
A TYLin Company


PENNA POWERS



STUDENT SCHOLARSHIPS

FEHR  PEERS



SUMMIT FRIENDS



LOUIS ALLORO
CHAMPION OF CHANGE



Wasatch Choice Vision



Partners of the Vision

- Wasatch Front Regional Council
- Mountainland Association of Governments
- Chambers of Commerce
- Envision Utah
- Kem C. Gardner Policy Institute
- Metropolitan Research Center at The University of Utah
- Utah Association of Counties
- Utah Department of Transportation
- Utah League of Cities and Towns
- Utah Transit Authority



Wasatch Choice Vision



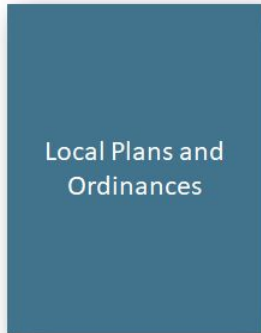
Economic Development

Comprehensive Economic Development Strategy



Land Use

Transportation and Land Use Connection



Transportation

Regional Transportation Plan



Wasatch Choice Map #wherematters



- Vision
- Transportation
- Land Use
- Economic Development
- Recreation



VISION FOR OUR FUTURE

Utah is growing... and we have a plan. Our future quality of life depends on the choices we make today. Wasatch Choice is our communities' shared vision for transportation investments, development patterns, and economic opportunities. The Wasatch Choice map and key strategies show how advancing the Vision can enhance quality of life even as we grow.

Key Strategies

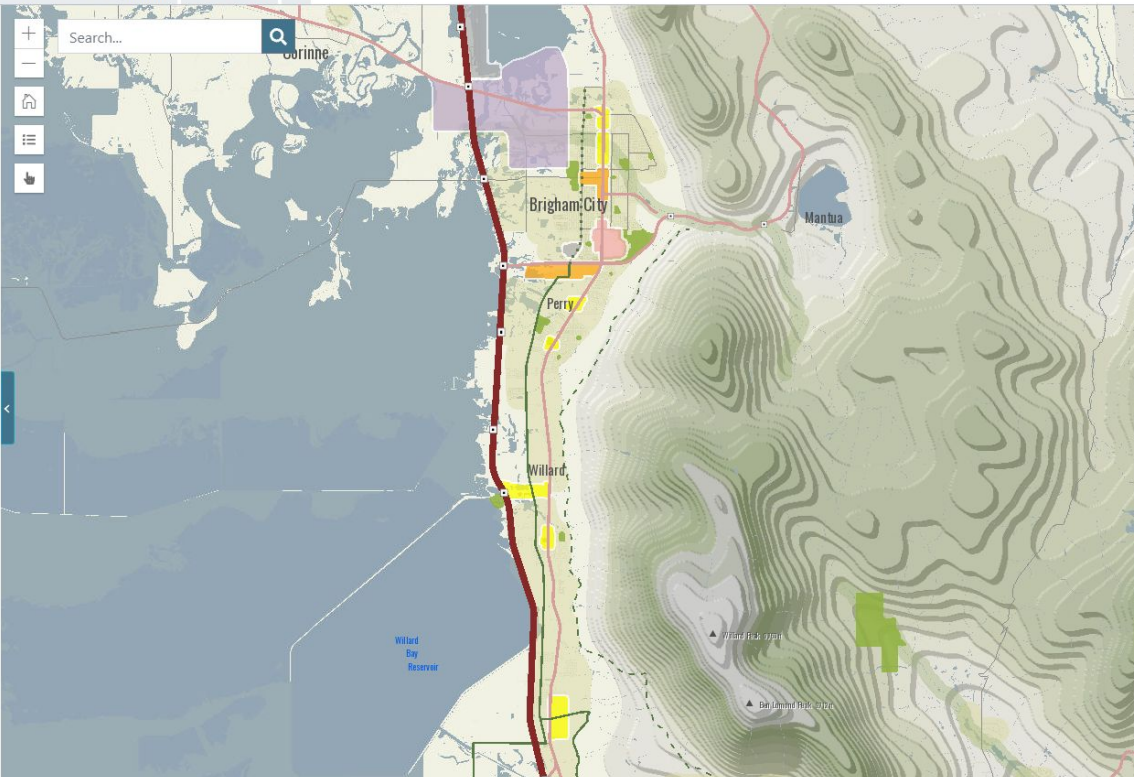
The Wasatch Choice Vision is built on four key strategies:

- 1** Provide transportation choices
- 2** Support housing options
- 3** Preserve open space
- 4** Link economic development with transportation and housing decisions

Benefits of the Vision

Implementing the Wasatch Choice Vision promotes high quality of life now and for generations to come.

- Livable and healthy communities
- Access to economic and educational opportunities
- Manageable and reliable traffic conditions
- Quality transportation choices
- Safe, user friendly streets
- Clean air
- Housing choices and affordable living expenses
- Fiscally responsible communities and infrastructure



Filter reset

- Transportation
 - Roads
 - Transit
 - Bike/Ped
- Land Use
 - Centers
 - General Land Use
 - Open Space

Project Information

Click on a feature for more information



SPEAKERS



Eileen Barron
UDOT



Mike Christensen
Utah Rail Passengers
Association



Claudia Loayza
Division of
Multicultural Affairs



Nikki Navio
Wasatch Front Regional
Council





Utah Division of

Multicultural Affairs

Our mission is to promote an inclusive and welcoming climate in Utah. Our efforts prioritize opportunity-building and cultivating a sense of belonging.



**MAGNIFYING A GROWING,
MOSAIC UTAH**

45%

DIVERSE POPULATION GROWTH SINCE 2010

Kem C. Gardner Diversity in
Data Book, 2021

Nearly 40% of statewide
population growth over
the last decade is from
racially and ethnically
diverse communities.

1 in 4

PERCENTAGE OF DIVERSE POPULATION

Kem C. Gardner Diversity in
Data Book, 2021

Utah's racially and
ethnically diverse
communities, which make
up 22% of the state's total
population

20+

LANGUAGES IN UTAH

2022 Utah Language Report

20+ major languages
used in Utah, spoken
and signed.

UTAH NAMED BEST STATE

ECONOMY, FISCAL STABILITY,
EDUCATION,
INFRASTRUCTURE

U.S. News & World Report

Utah is more diverse than
states like Ohio,
Minnesota and Wisconsin
and similar in diversity to
Pennsylvania and
Michigan.

EXPANDING OPPORTUNITY FRAMEWORK

A GUIDE FOR STATE AGENCIES TO DEVELOP OPPORTUNITY ACTION PLANS



DATA INFORMED

OPPORTUNITY DRIVEN

PEOPLE INSPIRED

UTAH EXPANDING OPPORTUNITY FRAMEWORK

PUTTING PRINCIPLES INTO PRACTICE

- **Data Informed:** What data do we need to understand areas of opportunities and gaps in thriving?
- **Opportunity Driven:** What opportunities exist to address gaps in a sustainable way?
- **People Inspired:** How can we strengthen relationships with communities and invest in our greatest asset, human connection?

AS WE GROW, WE LEARN

> guidingourgrowth.utah.gov



Share your thoughts on Utah's housing, transportation, water, recreation areas, and GROWTH. Join the conversation.

[TAKE THE SURVEY](#)

** Take the survey to be entered to win one of four \$250 Amazon or Home Depot gift cards or other prizes like national/state park passes, Lagoon tickets, and more!*





All Users Mindset

People First	All Modes	Transportation Equity
Decision-making focused on the end user's experience.	Walking, biking, transit and vehicle travel are addressed in transportation decision-making.	Fairness in mobility and accessibility to meet the needs of all community members. (US DOT)





WASATCH CHOICE

VISION



Livable and healthy communities



Access to economic and educational opportunities



Manageable and reliable traffic conditions



Quality transportation choices



Safe, user friendly streets



Clean air



Housing choices and affordable living expenses



Fiscally responsible communities and infrastructure



Sustainable environment, including water, agricultural, and other natural resources



Ample parks, open spaces, and recreational opportunities



MAG
Expert Resources. Enriching Lives.



The Wasatch Choice Community Advisory Committee



The Wasatch Choice Community Advisory Committee is built upon the goal that all communities have access to opportunities for work, education, and other essential destinations, and the recognition that land use and transportation policies have a history of perpetuating racial and economic inequities in America. The Wasatch Choice partners are committed to identifying solutions for positive change.



The Details....

- Representative or serve in a role that works directly with community members
- Information sharing/relationship building
- Multi-agency partnership
- Lean into better transparency of how transportation planning and decision-making
- Compensated for time attending meetings virtually/in-person



Shared Committee Objectives

Planning:

- A. Transportation partners will inform the Advisory Committee on Wasatch Choice Vision plans and programs and create a space for learning about transportation and land use efforts.
 - a. *Space for learning will be created through our meetings*
 - b. *Tools and resources will be shared on an ongoing basis*
- B. The Advisory Committee will advise transportation partners on planning efforts relevant to the needs and lived experiences of diverse communities throughout the Wasatch Front region.

Outreach and engagement:

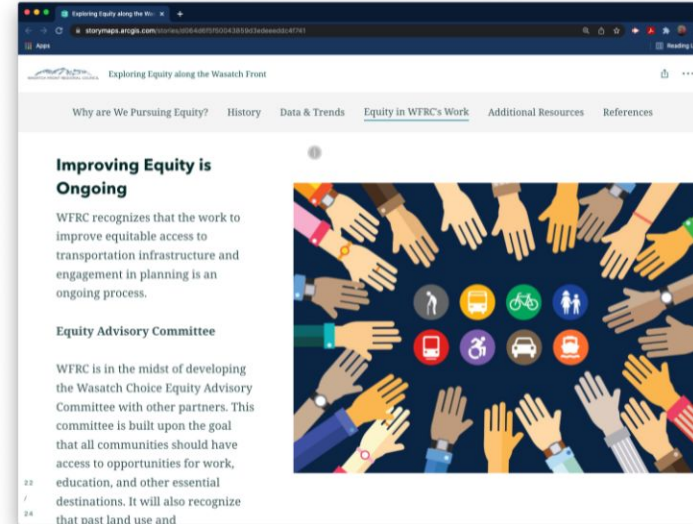
- C. Transportation partners will regularly share plans, studies, and programs, along with supportive materials and resources with the Advisory Committee to share with the community.
- D. The Advisory Committee will (i) advise transportation partners on new avenues for outreach and public engagement for the Wasatch Choice Vision and related transportation and land use efforts, and will (ii) increase awareness and spread the word with members of their communities.

Responsibility:

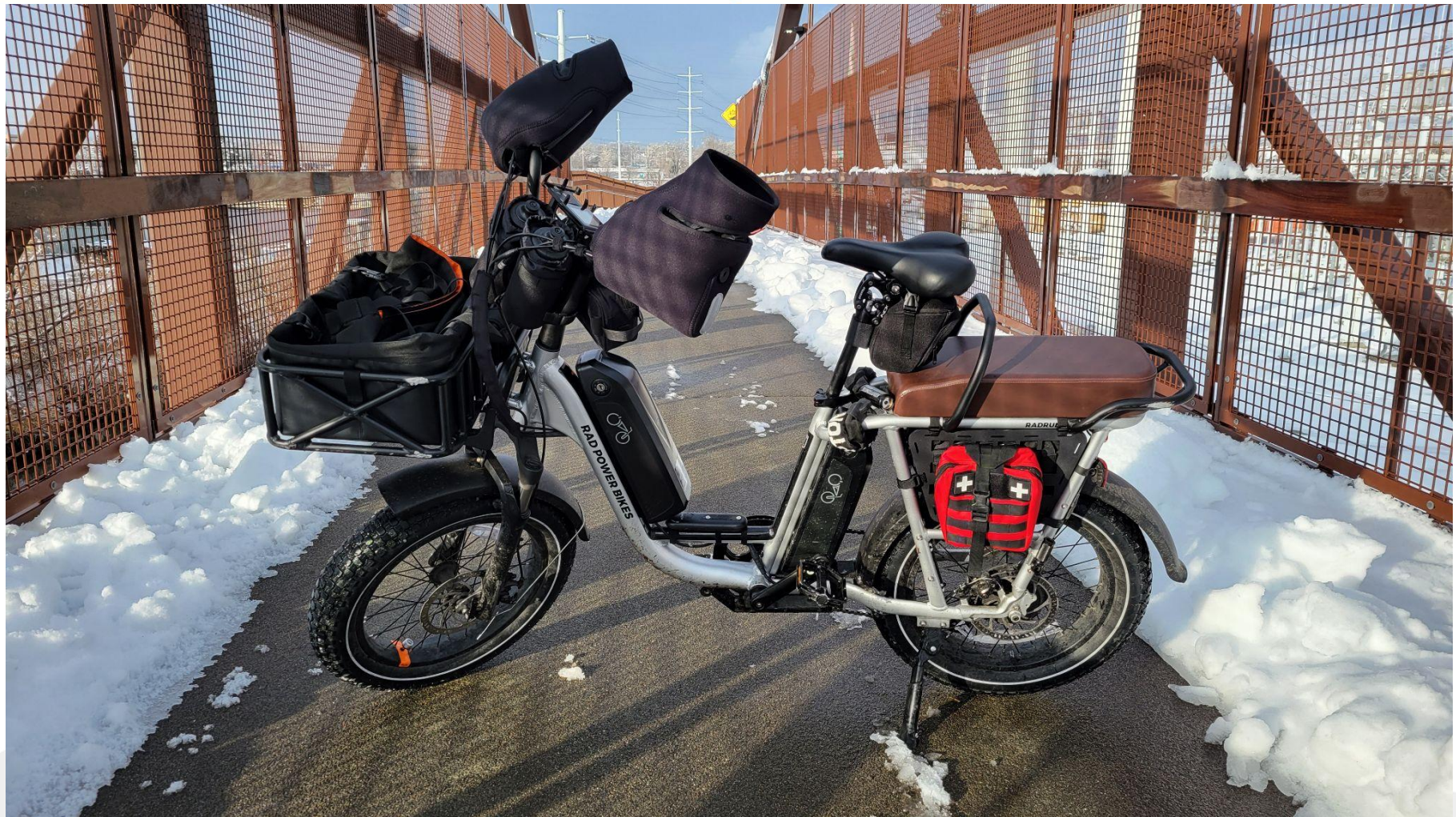
- E. The Advisory Committee will communicate issues and ideas, related to transportation and land use, to the transportation partners. The transportation partners will work with the Advisory Committee to consider issues identified through planning efforts.



Planning for equity and access to opportunities in WFRC's Work















When all you've got is a hammer,
everything looks like a nail!





Move Utah

ACTIVE, HEALTHY, CONNECTED COMMUNITIES

Catching the Vision: How the Wasatch Choice
Vision is Expanding Opportunities for All